



Yale University, School of Architecture

---

Clearing Brasília

Author(s): Oscar Niemeyer

Source: *Perspecta*, Vol. 34 (2003), pp. 91-93

Published by: [The MIT Press](#) on behalf of *Perspecta*.

Stable URL: <http://www.jstor.org/stable/1567322>

Accessed: 24/06/2014 21:04

---

Your use of the JSTOR archive indicates your acceptance of the Terms & Conditions of Use, available at <http://www.jstor.org/page/info/about/policies/terms.jsp>

JSTOR is a not-for-profit service that helps scholars, researchers, and students discover, use, and build upon a wide range of content in a trusted digital archive. We use information technology and tools to increase productivity and facilitate new forms of scholarship. For more information about JSTOR, please contact [support@jstor.org](mailto:support@jstor.org).

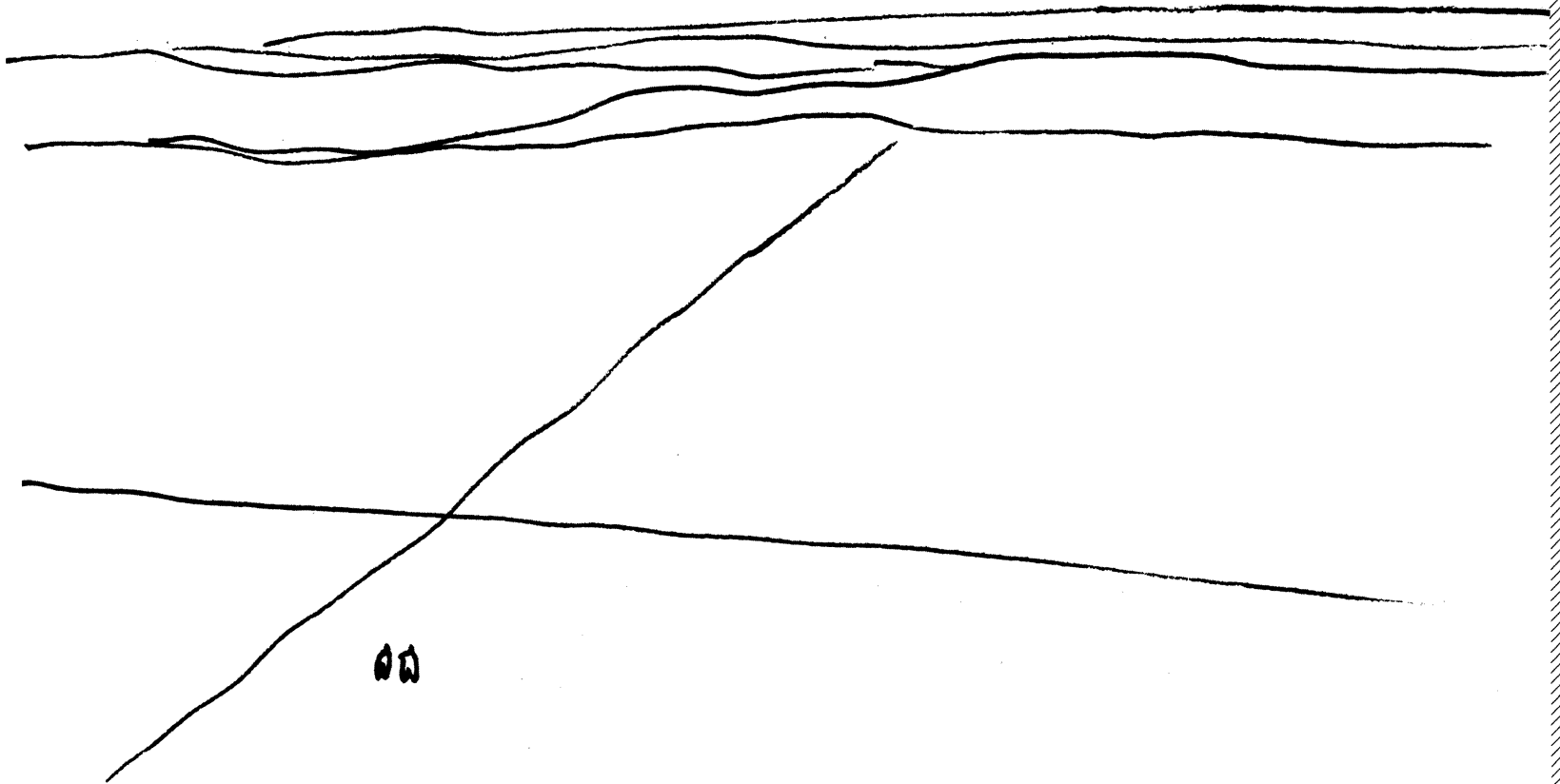


Yale University, School of Architecture and The MIT Press are collaborating with JSTOR to digitize, preserve and extend access to *Perspecta*.

<http://www.jstor.org>

"Founding a city in the wilderness is a deliberate act of conquest, a gesture after the manner of the pioneering colonial tradition, and the competitor's conception of such a city would be most important. This is particularly so because the city will not be a result of regional planning but the cause of it: its foundation will lead, later, to the planned development of the whole region."

—Lucio Costa, presenting his winning design for Brasília in the "Report of a Pilot Plan for Brasília"



### CLEARING BRASÍLIA

S 15°47', W 47°55'

1,015 km from São Paulo, 1,148 km from Rio de Janeiro, 2,120 km from Belém

Average temperature: 20.5°C (69° F)

Inaugurated: 29 April 1960

Planner: Lucio Costa

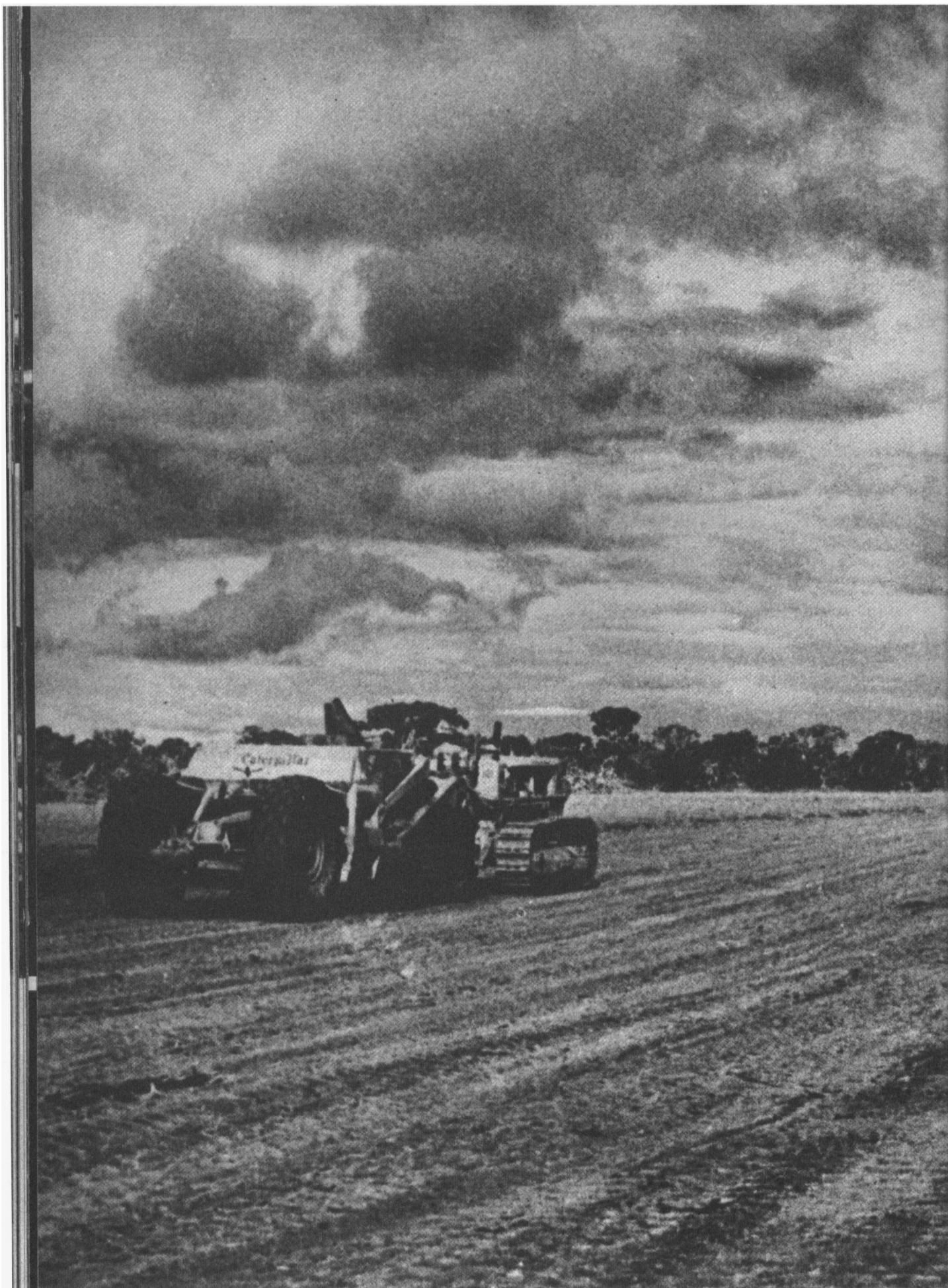
Architect: Oscar Niemeyer

#### 1956

Nearest paved road:	640 km
Nearest railroad:	125 km
Nearest airport:	190 km
Available timber:	1,200 km
Available steel:	1,600 km
Available sand/gravel:	local
Builders:	100,000+
Intended population:	500,000

#### 2003

Population (2000)	2,043,169
Area (federal district)	5,783 sq km
Longest highway	2,276 km, connecting to Belém



29

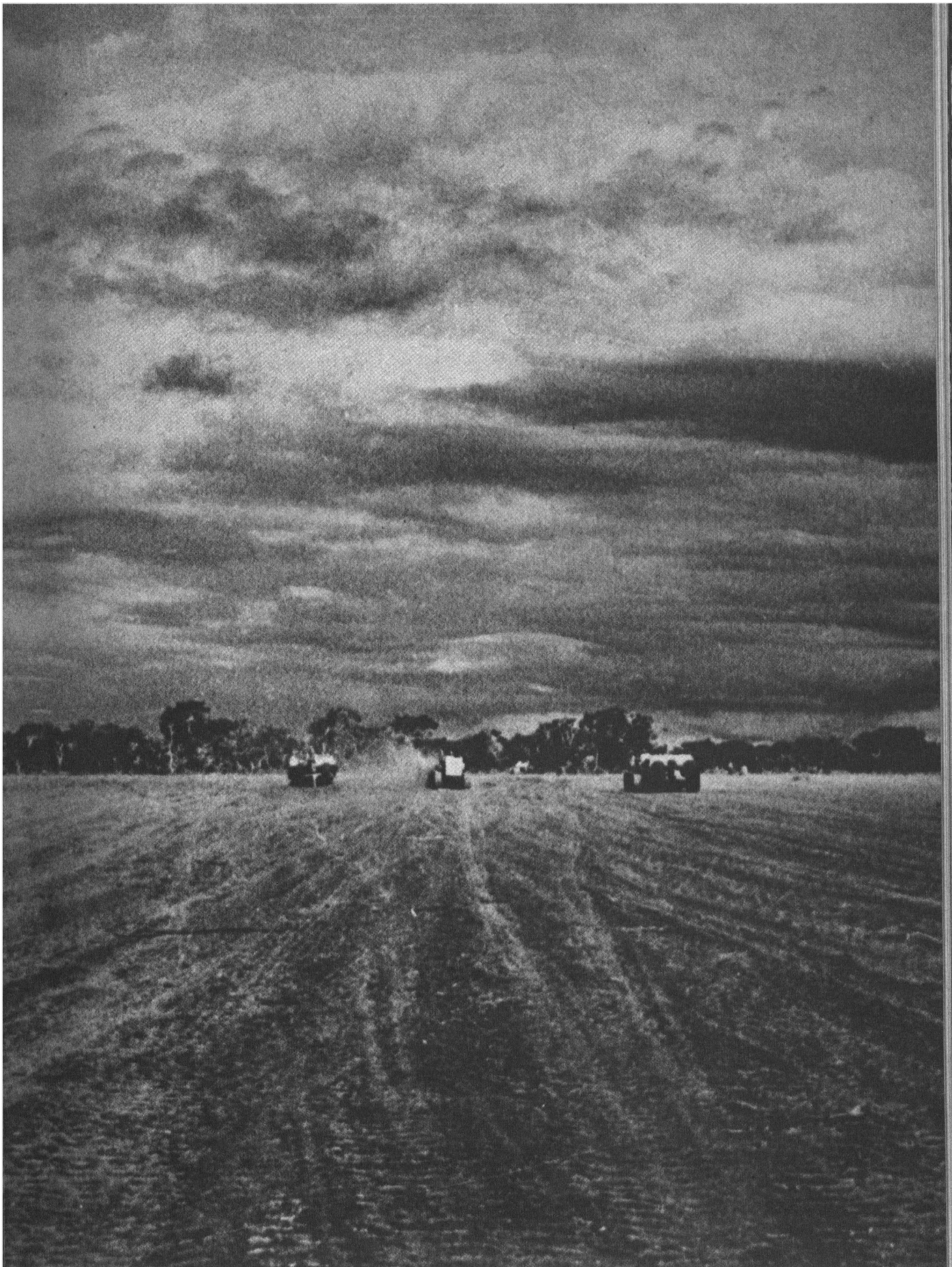
CLEARING BRASÍLIA

OSCAR NIEMEYER

1960

92

Perspecta 34



CLEARING BRASÍLIA

OSCAR NIEMEYER

1960

30